



# MONTHLY MEMBERSHIP PROGRESS REPORT

District 1 B

Results as of: 5/31/2014

GMT: GARY ANDERSON

LOCATION ILLINOIS

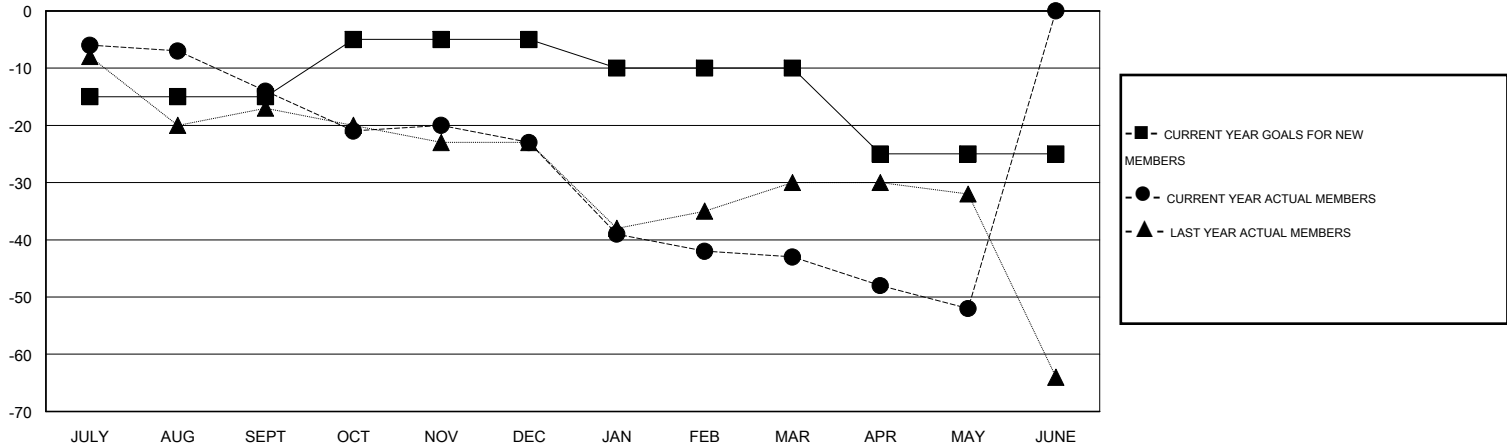
GMT CA 1

Clubs					Members				
RESULTS FOR 2013-2014					RESULTS FOR 2013-2014				
QUARTER	NEW CLUB GOAL	ACTUAL NEW CLUBS	ACTUAL DROPPED CLUBS	ACTUAL NET GAIN/LOSS	QUARTER	NEW MEMBER GOAL	ACTUAL TOTAL MEMBERS ADDED	ACTUAL DROPPED MEMBERS	ACTUAL NET GAIN/LOSS
JULY/AUG/SEPT	0	0	0	0	JULY/AUG/SEPT	-15	24	38	-14
OCT/NOV/DEC	0	0	0	0	OCT/NOV/DEC	10	18	27	-9
JAN/FEB/MAR	0	0	0	0	JAN/FEB/MAR	-5	14	34	-20
APR/MAY/JUNE	0	0	0	0	APR/MAY/JUNE	-15	2	11	-9

GOALS AND ACTUAL NEW CLUBS CUMULATIVE



GOALS AND ACTUAL MEMBERS CUMULATIVE



DROPPED CLUBS: 0	21 CLUBS OF 36 ADDED 1 OR MORE NEW MEMBERS	<b>GENDER DISTRIBUTION</b> MALE 861 (81.84%) FEMALE 191 (18.16%)
<b>DROPPED MEMBERS</b> DECEASED 17 CLUB CANCELLED 0 OTHER 93 TOTAL 110	<a href="#">CLICK HERE FOR HEALTH ASSESSMENT DATA</a>	FAMILY UNIT MEMBERS 154 HEAD OF HOUSEHOLD 75 NON-HEAD OF HOUSEHOLD 79